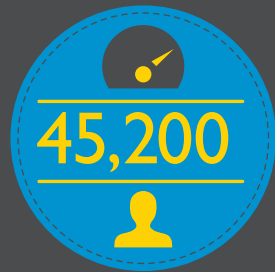
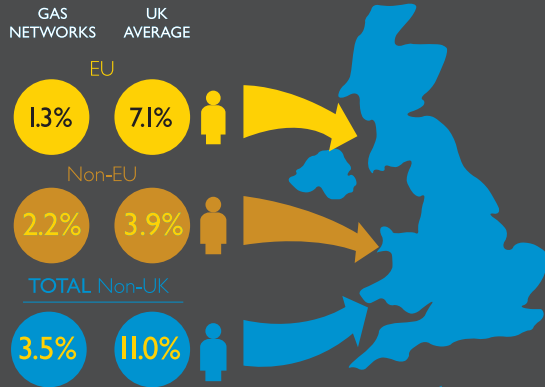




NUMBER OF EMPLOYEES ¹



PROPORTION OF NON-UK NATIONALS IN THE WORKFORCE ²



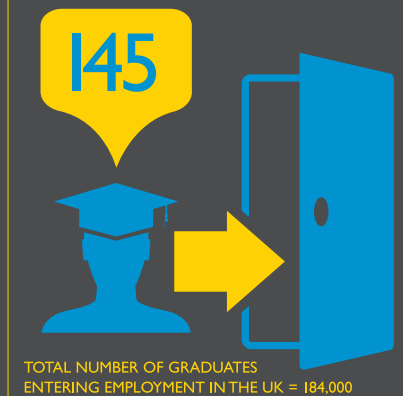
NUMBER OF COMPANIES ³



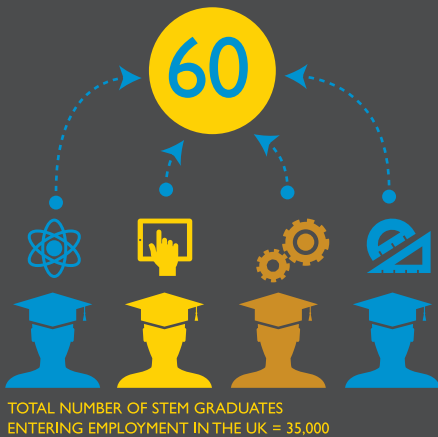
TOP 3 OCCUPATIONAL GROUPS (% OF EMPLOYEES) ⁴



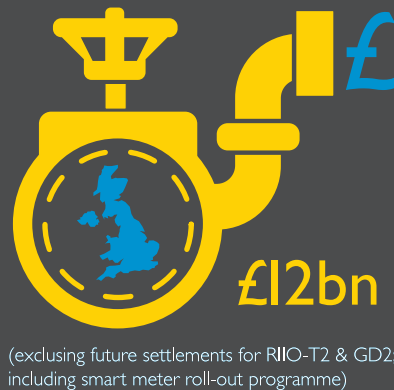
GRADUATES ENTERING EMPLOYMENT IN THE INDUSTRY ⁵



STEM GRADUATES ENTERING EMPLOYMENT IN THE INDUSTRY ⁶



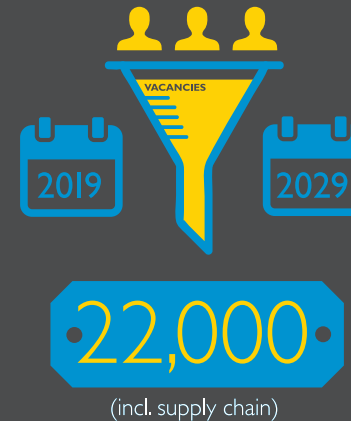
NATIONAL INFRASTRUCTURE PIPELINE EXPENDITURE FOR THE INDUSTRY ⁷



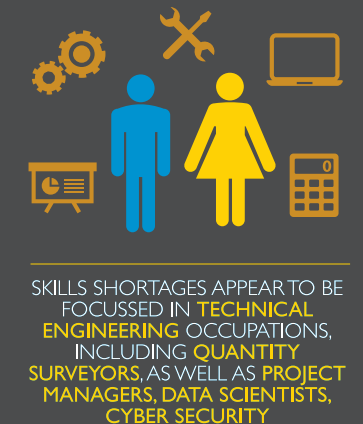
PERCENTAGE OF VACANCIES THAT ARE SKILLS SHORTAGE VACANCIES ⁸



ESTIMATE OF VACANCIES TO BE FILLED OVER NEXT DECADE ⁹



OCCUPATIONS REPORTED AS BEING IN SHORTAGE



Data sources / notes:

- 1 Business Register and Employment Survey, ONS, 2017 and Census of Employment, NI, 2017
- 2 Labour Force Survey, ONS, January-December 2018
- 3 UK Business Counts (local units by industry and employment size band - Private sector only), ONS, 2017
- 4 Labour Force Survey, ONS, January-December 2018
- 5 HESA Student Record, 2016/17
- 6 HESA Student Record, 2016/17
- 7 National Infrastructure and Construction Pipeline, Infrastructure and Projects Authority, Autumn 2018 Update

8 UK Employer Skills Survey, Department for Education, 2017

9 EUSG (2017) Many Skills: One Vision, Workforce Renewal and Skills Strategy

Note: These data are presented as estimates only. Sampling variability may mean that the "true" values may be higher or lower than those reported here.

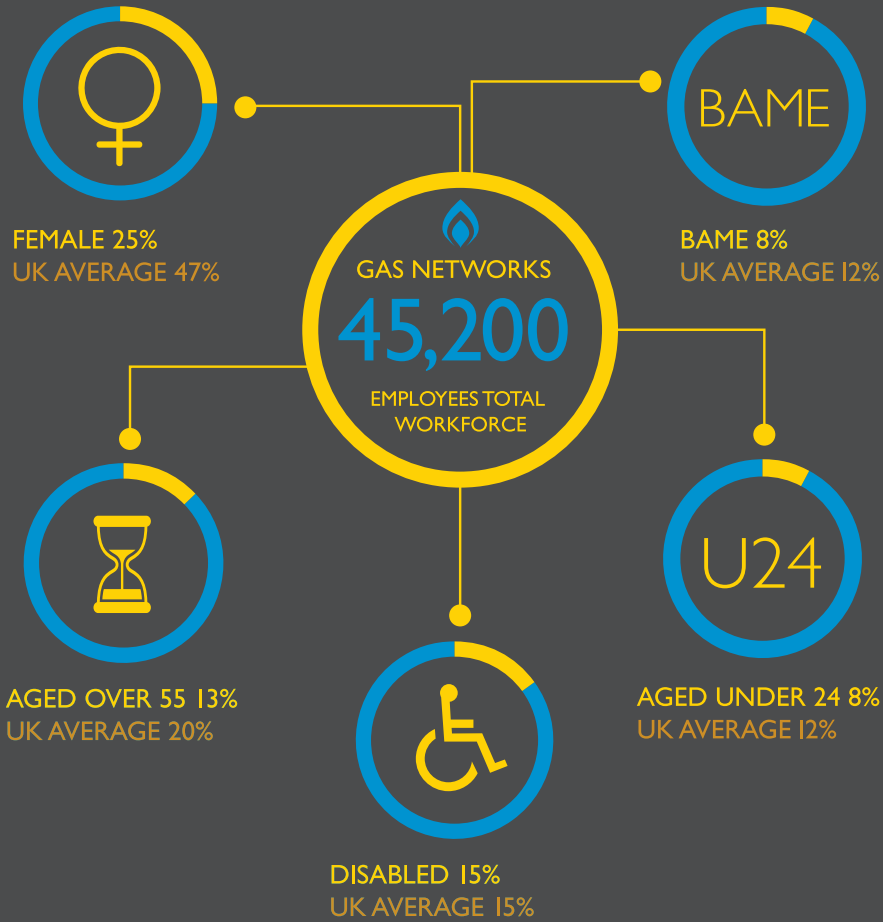
Contact: research@euskills.co.uk



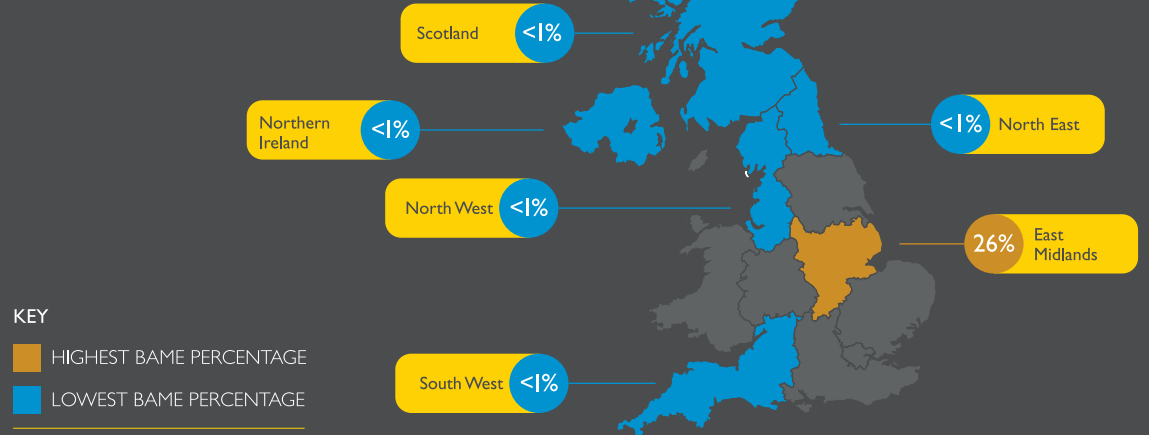
ENERGY & UTILITIES
SKILLS PARTNERSHIP



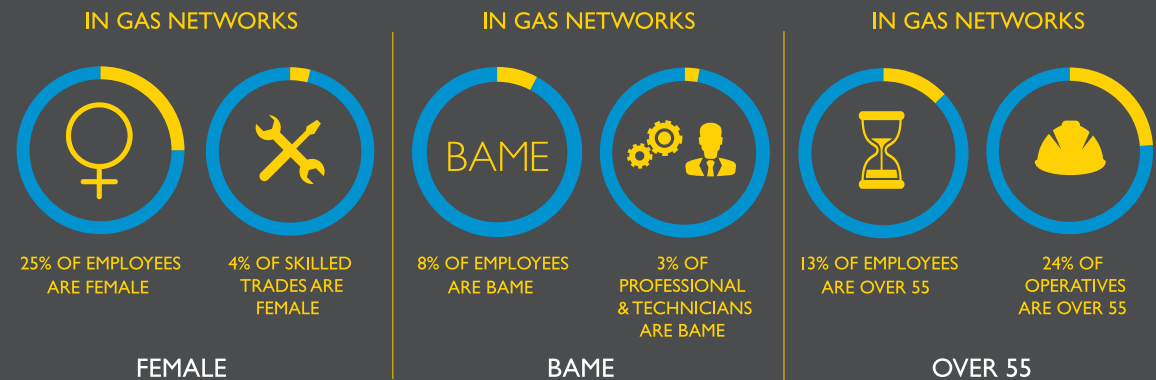
DIVERSITY & INCLUSION DASHBOARD 1



REGIONS WITH THE HIGHEST AND LOWEST BAME PERCENTAGE 2



WORST PERFORMING OCCUPATIONS 1



Data sources / notes:

1 Labour Force Survey, ONS, January-December 2018

2 Annual Population Survey, ONS, 2018

Note: These data are presented as estimates only. Sampling variability may mean that the "true" values may be higher or lower than those reported here.