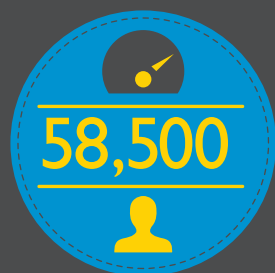
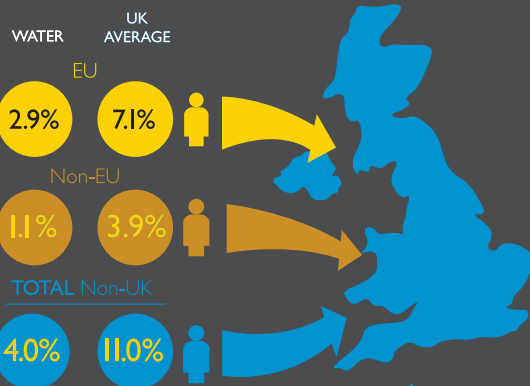




## NUMBER OF EMPLOYEES <sup>1</sup>



## PROPORTION OF NON-UK NATIONALS IN THE WORKFORCE <sup>2</sup>



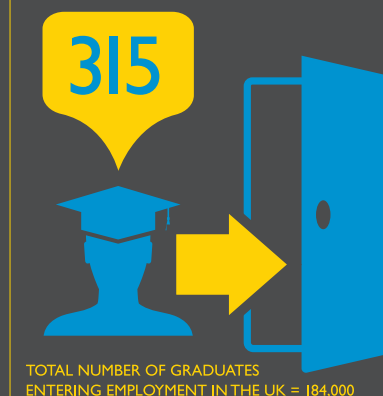
## NUMBER OF COMPANIES <sup>3</sup>



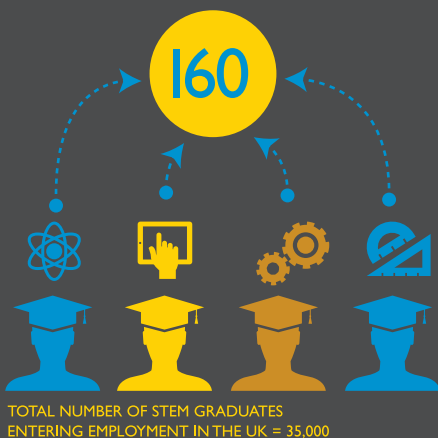
## TOP 3 OCCUPATIONAL GROUPS (% OF EMPLOYEES) <sup>4</sup>



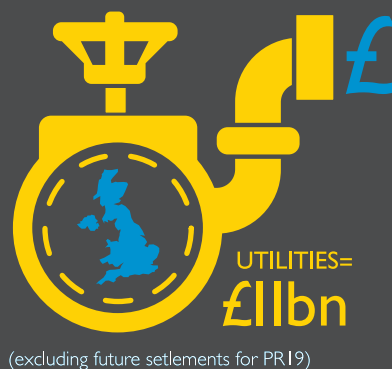
## GRADUATES ENTERING EMPLOYMENT IN THE INDUSTRY <sup>5</sup>



## STEM GRADUATES ENTERING EMPLOYMENT IN THE INDUSTRY <sup>6</sup>



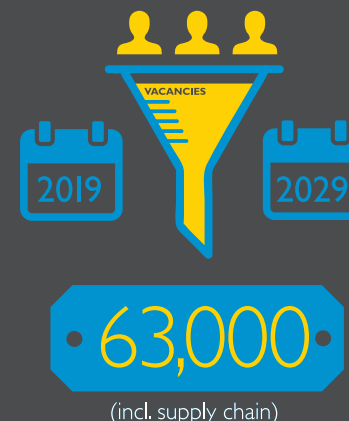
## NATIONAL INFRASTRUCTURE PIPELINE EXPENDITURE FOR THE INDUSTRY <sup>7</sup>



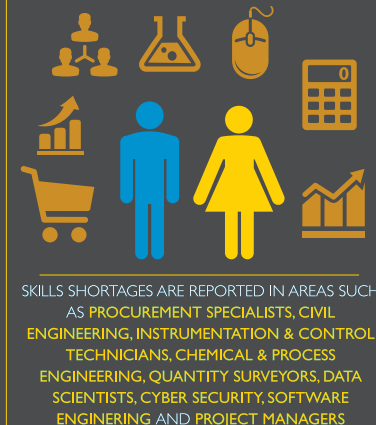
## PERCENTAGE OF VACANCIES THAT ARE SKILLS SHORTAGE VACANCIES <sup>8</sup>



## ESTIMATE OF VACANCIES TO BE FILLED OVER NEXT DECADE <sup>9</sup>



## OCCUPATIONS REPORTED AS BEING IN SHORTAGE



### Data sources / notes:

- 1 Business Register and Employment Survey, ONS, 2017 and Census of Employment, NI, 2017
- 2 Labour Force Survey, ONS, January-December 2018
- 3 UK Business Counts (local units by industry and employment size band - Private sector only), ONS, 2017
- 4 Labour Force Survey, ONS, January-December 2018
- 5 HESA Student Record, 2016/17
- 6 HESA Student Record, 2016/17
- 7 National Infrastructure and Construction Pipeline, Infrastructure and Projects Authority, Autumn 2018 Update

8 UK Employer Skills Survey, Department for Education, 2017

9 EUSG (2017) Many Skills: One Vision, Workforce Renewal and Skills Strategy

Note: These data are presented as estimates only. Sampling variability may mean that the "true" values may be higher or lower than those reported here.

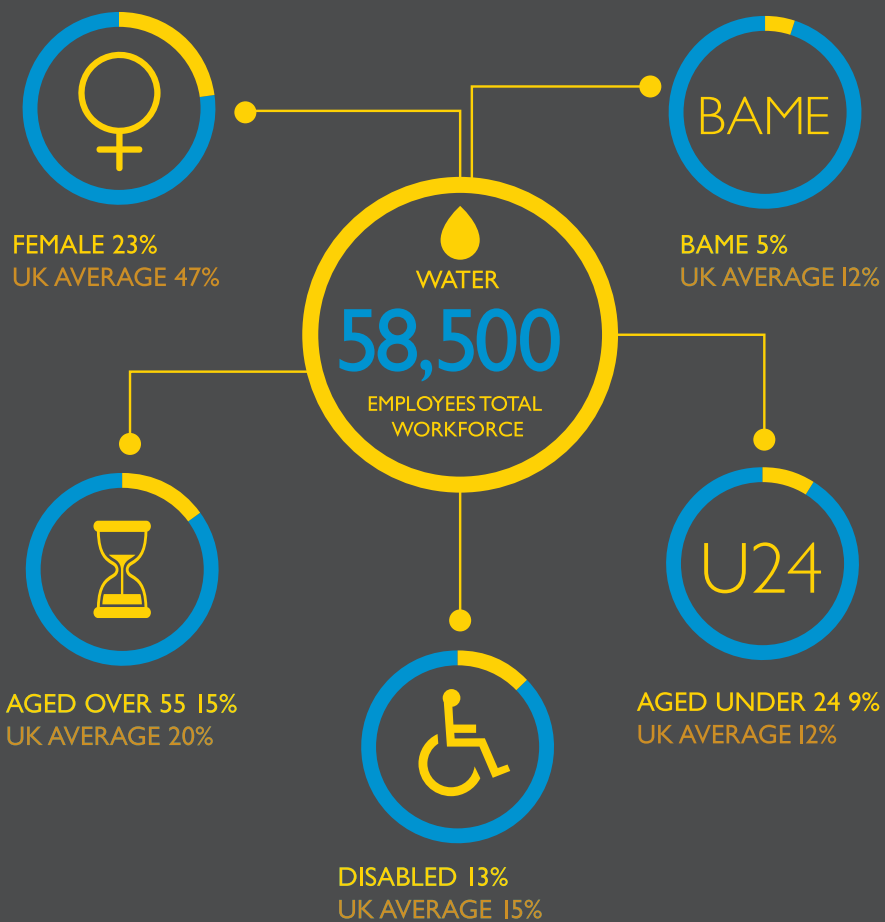
Contact: [research@euskills.co.uk](mailto:research@euskills.co.uk)



ENERGY & UTILITIES  
SKILLS PARTNERSHIP



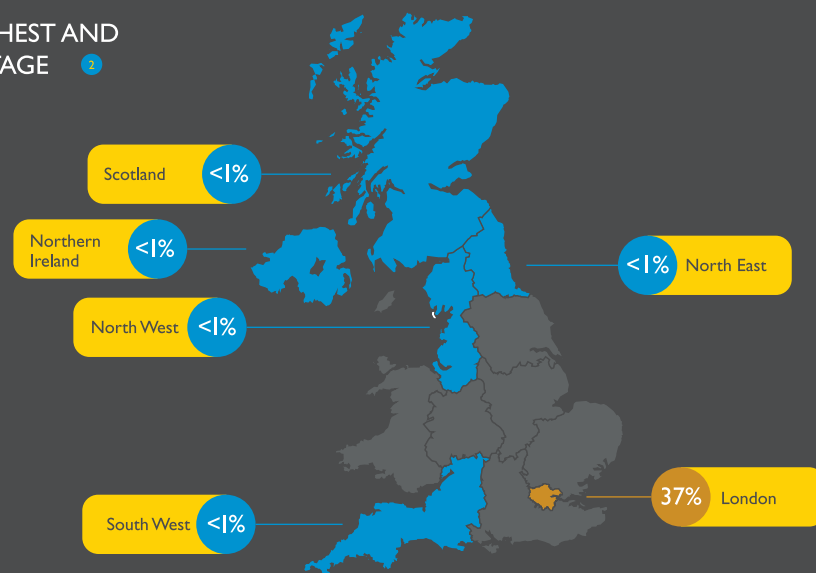
## DIVERSITY & INCLUSION DASHBOARD 1



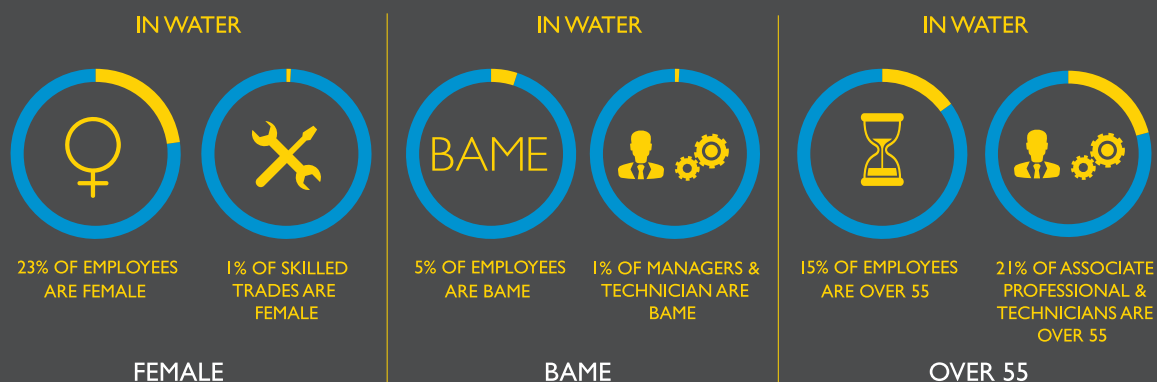
## REGIONS WITH THE HIGHEST AND LOWEST BAME PERCENTAGE 2

### KEY

- HIGHEST BAME PERCENTAGE
- LOWEST BAME PERCENTAGE



## WORST PERFORMING OCCUPATIONS 1



### Data sources / notes:

1 Labour Force Survey, ONS, January-December 2018

2 Annual Population Survey, ONS, 2018

**Note:** These data are presented as estimates only. Sampling variability may mean that the "true" values may be higher or lower than those reported here.

