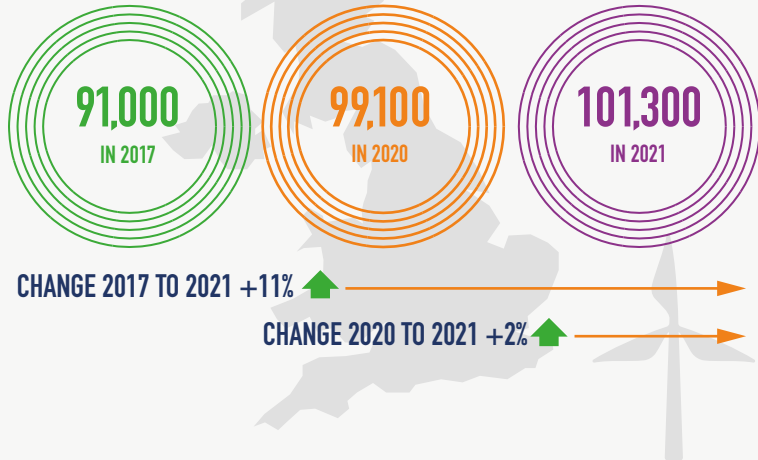


TOTAL EMPLOYMENT

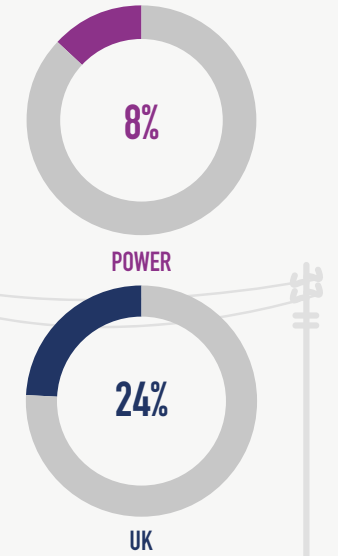
THE UK POWER INDUSTRY EMPLOYED:



IN THE FOLLOWING AREAS IN 2021:

	CHANGE 2017-2021	CHANGE 2020-2021
PRODUCTION OF ELECTRICITY 37,025	+8,225 (+29%)	+4,125 (+13%)
TRANSMISSION OF ELECTRICITY 4,550	+850 (+23%)	+450 (+11%)
DISTRIBUTION OF ELECTRICITY 50,875	-725 (-1%)	-2,025 (-4%)
TRADE OF ELECTRICITY 8,825	+1,925 (+28%)	-375 (-4%)

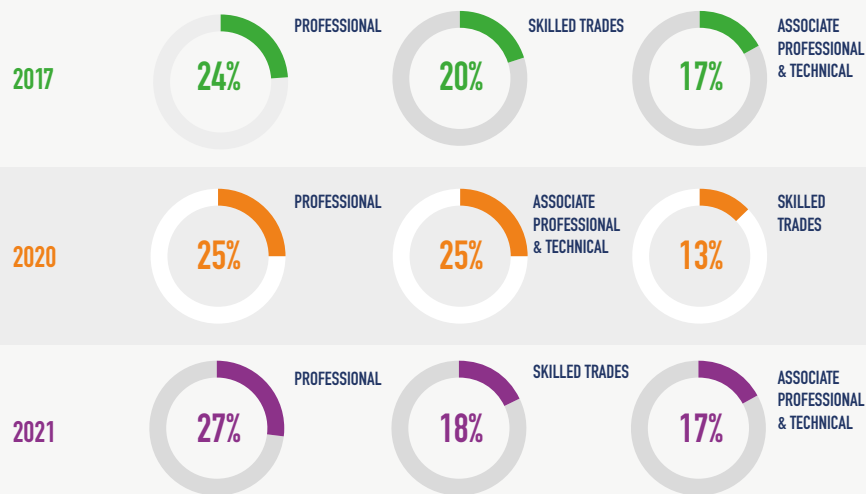
% OF VACANCIES THAT ARE SKILLS SHORTAGES 2019:



Business Register and Employment Survey, ONS & NISRA.

UK Employer Skills Survey, 2019, Department for Education

TOP THREE OCCUPATIONAL GROUPS



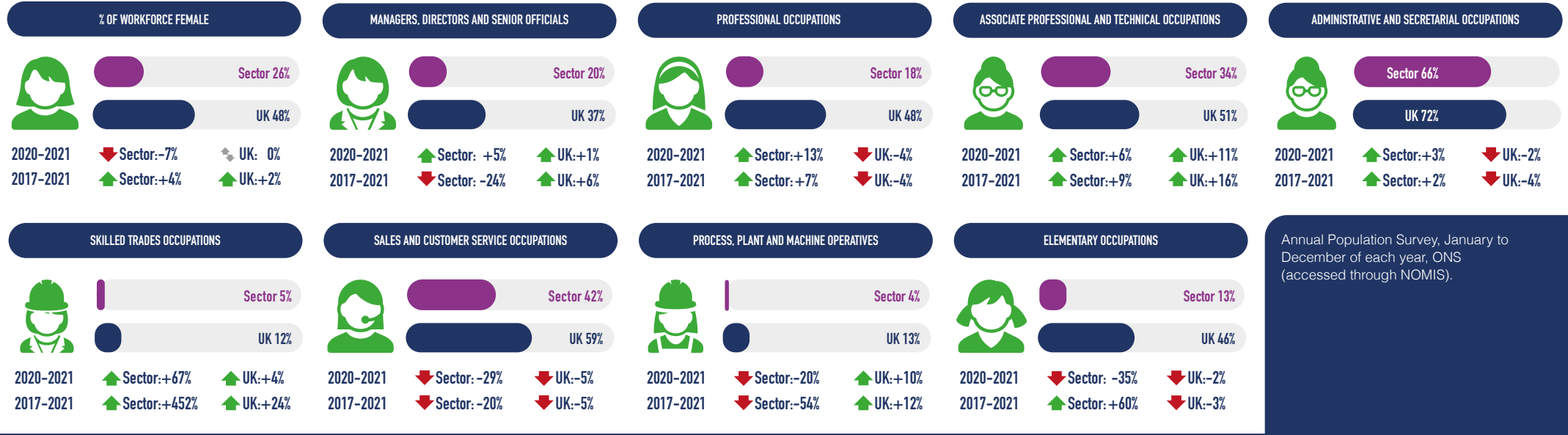
FORECAST NUMBER OF VACANCIES 2020-2029



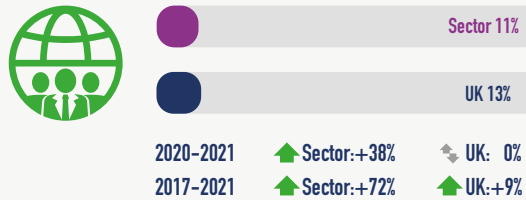
Workforce Renewal and Skills Strategy: 2020-2025, Energy & Utility Skills.

Energy & Utility Skills estimate based on Labour Force Survey (ONS) 4-quarter average (January-December 2021).

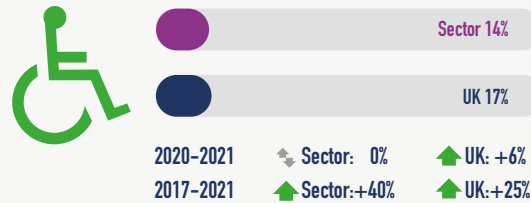
PERCENTAGE OF POWER INDUSTRY WORKFORCE - FEMALE



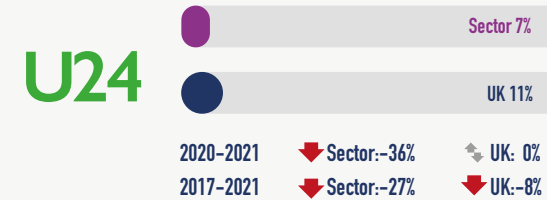
PERCENTAGE OF POWER WORKFORCE - ETHNIC MINORITY



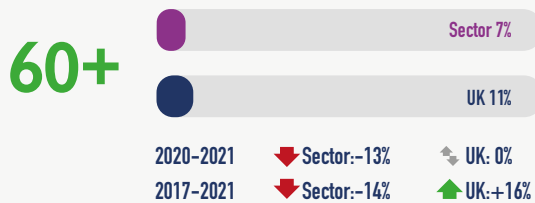
PERCENTAGE OF POWER WORKFORCE - DISABLED



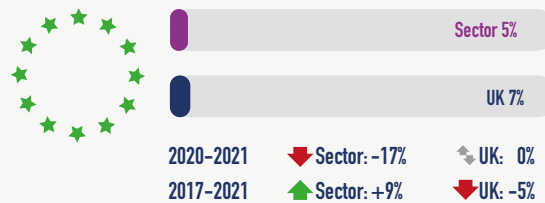
PERCENTAGE OF POWER WORKFORCE - AGED 16-24



PERCENTAGE OF POWER WORKFORCE - 60+



PERCENTAGE OF POWER WORKFORCE - EU NATIONALS



PERCENTAGE OF POWER WORKFORCE - NON-EU NATIONALS



Sector workforce = Energy & Utility Skills estimate based on Labour Force Survey (ONS) 4-quarter average (January-December 2021).

UK workforce = Annual Population Survey, January to December of each year, ONS (accessed through NOMIS).